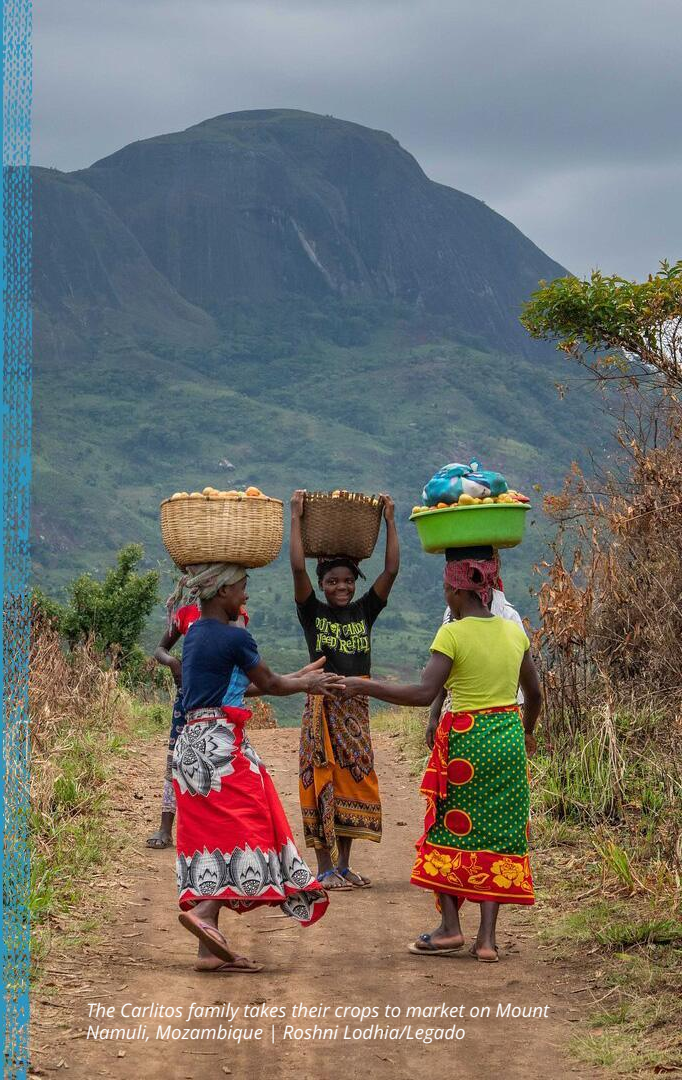




ACTIVATING THE POWER OF **LEGACY** SO THAT PEOPLE AND NATURE CAN THRIVE TOGETHER IN PURSUIT OF **CLIMATE JUSTICE**

Legado is a women-led, global nonprofit that works alongside Indigenous Peoples and local communities (IP&LCs) in places important for biodiversity (Kenya, Mozambique, Peru and growing) to ensure *they* have the tools, resources, and partnerships *they* need to design and implement solutions of *their* choosing that benefit both *their* communities and landscapes—an outcome we call **Thriving Futures**.



The Carlitos family takes their crops to market on Mount Namuli, Mozambique | Roshni Lodhia/Legado

THE PROBLEM

Indigenous Peoples steward 80% of the world's remaining biodiversity (with better outcomes) **yet their perspectives, knowledge and leadership are often not included** in the designs of solutions.

Solutions often fail because they are not conceived, driven or led by local leaders. This perpetuates the destruction of ecological resources and perpetuates the marginalization of communities, disproportionately **impacting women.**

Current models are also siloed— taking on issues one by one instead of seeing them as interconnected.

These **isolated, one-off solutions are often unsustainable and ineffective**—while communities and the land they steward continue to experience climate change's most severe consequences.

Community members from Mount Namuli, Mozambique and Ngilai, Kenya share their legacies | Roshni Lodhia/Legado

THE OPPORTUNITY

To support **IP&LC leadership** by facilitating **collective action** that puts the **power** in the hands of the communities to design and achieve a **Thriving Future.**

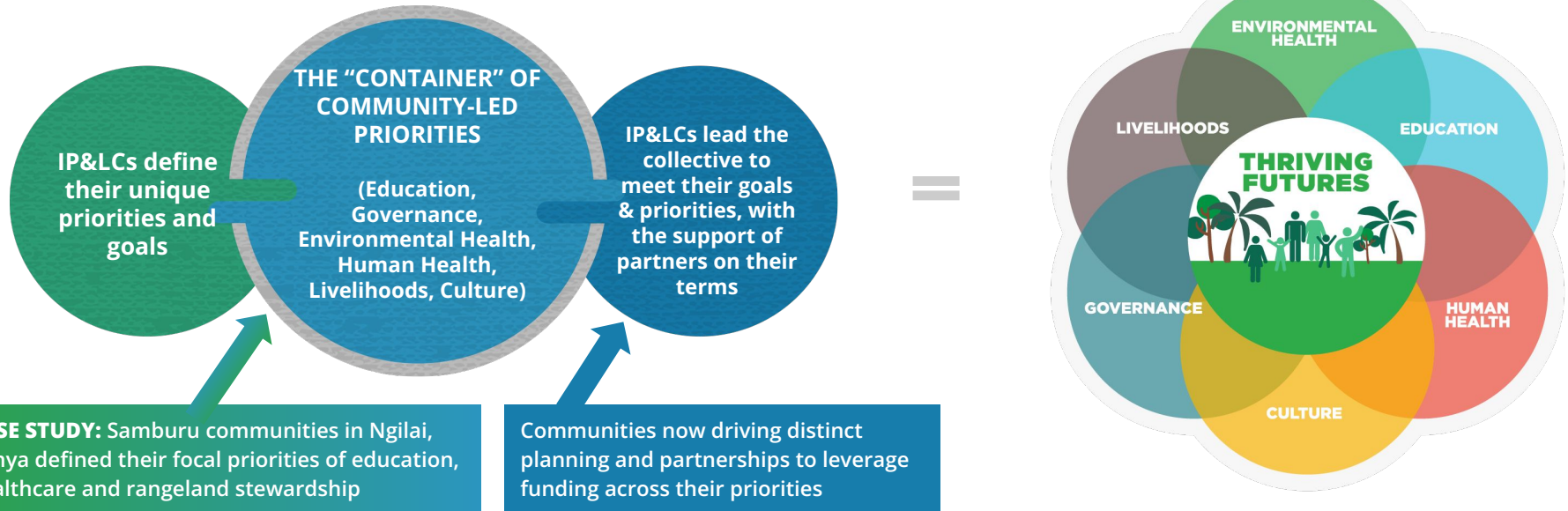
This is **climate justice.**



WHAT IS A THRIVING FUTURE?

Our work with IP&LCs creates a **“container” for community priorities**, which manages and holds the diverse range of initiatives (such as health, education, governance, biodiversity protection, etc.) necessary to build a way of living well—their Thriving Future.

This ensures that the ensuing investments in these communities are truly **community-led, have accountability mechanisms that are culturally relevant**, and have **community-driven indicators of success** (serve diverse populations, create tangible benefits) versus externalized indicators.



HOW WE DO IT

We work with IP&LCs to first understand, identify and realise their cross-sectoral priorities with the support of partners on their terms.

Our model revolves around using legacy as a unifying activator for agency and leadership which in turn builds individual and community resilience.

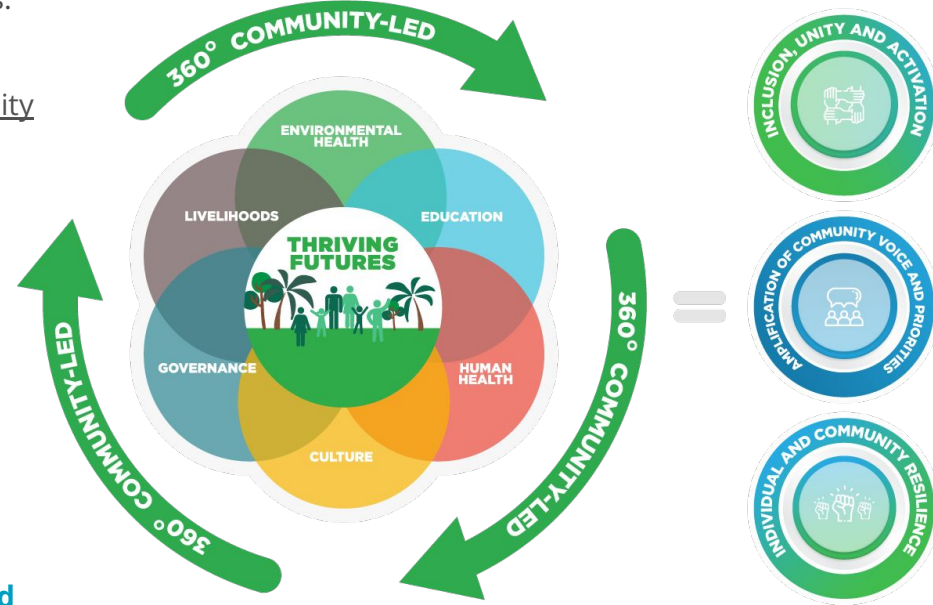
The work, and the result it creates, is a **Thriving Future**.

The process by which communities identify their priorities is co-developed, builds on existing strengths, is informed by context and strengthened through capacity sharing.

It involves and amplifies all community voices and perspectives, particularly those of women and youth.

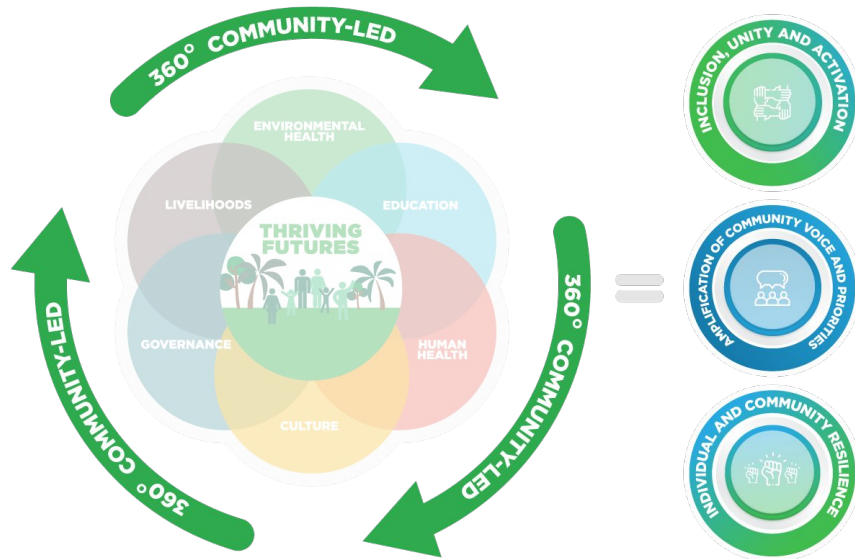
IP&LCs then lead across their range of interconnected priorities—education, human health, livelihoods, governance, culture and environmental health—leading to **360° community-led change**.

Doing this not only preserves and protects the ecologically vital areas stewarded by IP&LCs, but also serves as the foundation for collective action and the amplification of political voice.



WHAT IS 360° COMMUNITY-LED?

None of this can be done unless it is 360° community-led. This is what that looks like:



360° community-led means looking at development and conservation priorities in a holistic and intersectional way — the same way individuals and households often approach their overall well-being. In this approach, all dimensions (including environmental health, education, human health, governance, culture and livelihoods) are considered by the community and their partners in the process of creating a plan.

A 360° approach is used to assess and plan at two levels:

- Each dimension is first defined by the community and considered by itself and as it intersects with all other dimensions. For example education can mean both classroom-based education and the passing of traditional knowledge (a connection with culture).
- Each dimension is also then considered in the context of each priority developed by the communities (ex: how does a health center engage with environmental health).

360° community-led allows for the full community to be involved in decision-making, not just the powerful and connected. This is critical for centering women's voices and leadership; and ultimately connects all three outcomes of a Thriving Future process, resulting in individual and community resilience.

WHAT INFORMS AND GUIDES LEGADO'S APPROACH

COMMUNITY LEVEL ↔ GLOBAL LEVEL

Each of our programs is co-created with IP&LCs and local organization partners from the very beginning of the partnership journey.

We calibrate our methodology to current community context, planning processes and structures and together use tools from the Legado model to create a unique Thriving Future pathway.

HOW WE OPERATE

Our Advisors Are Our Communities

Our global program, its methodology and its direction are set by each of our community partners. We invest in these partners as co-leaders of our work. We are constantly integrating lessons learned from all of our partnerships, so what we learn in Kenya for example, informs how our program proceeds in Peru.

Legado Program Operations Up Close

- Over 75% of our team is based in regions where we work, with an increase to over 80% in September '23
- Over 58% of our team is from the communities and groups we serve, with an increase to over 68% in September '23
- Women-led with 95% female staff



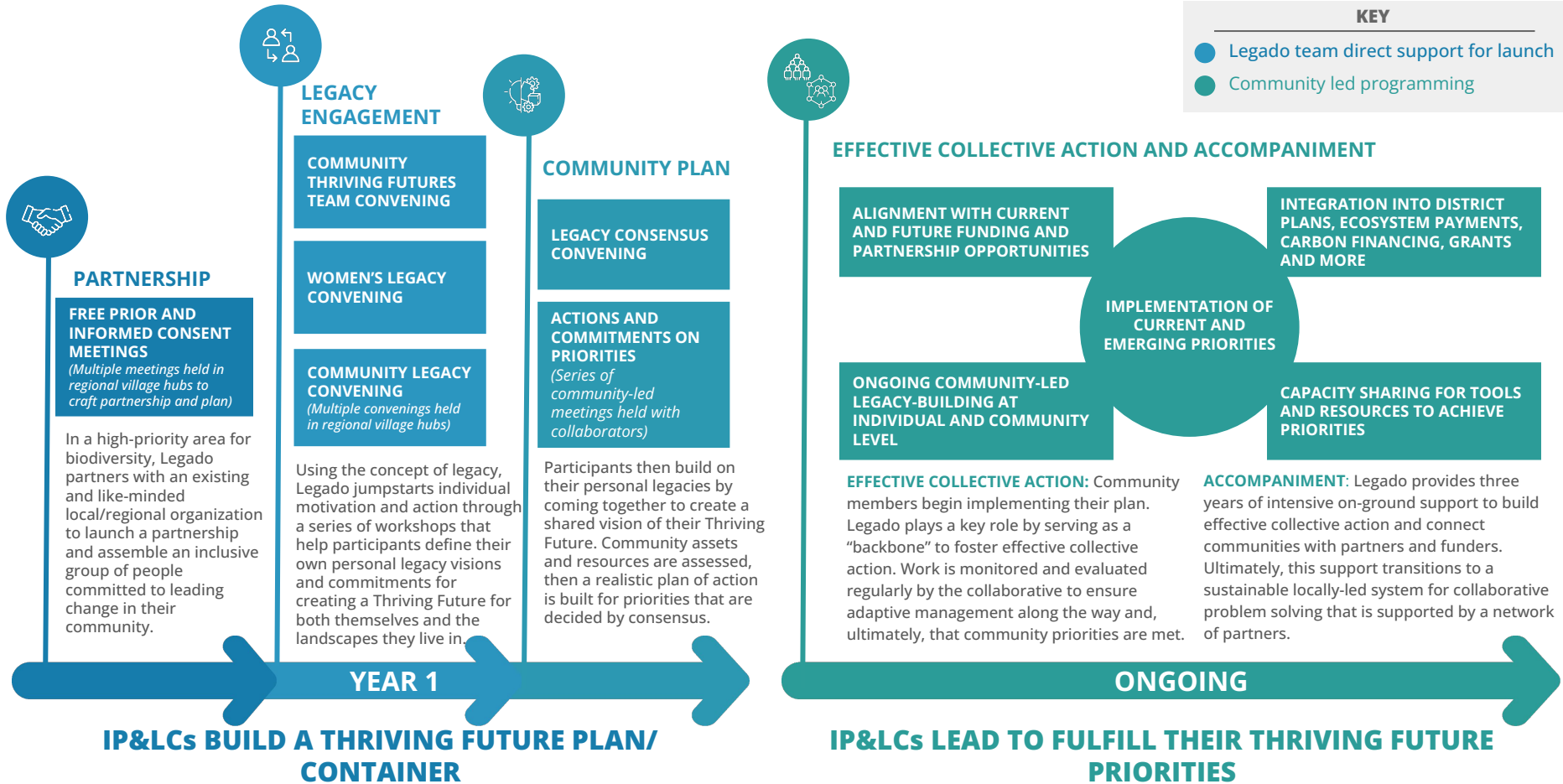
Ngilai Community members building their version of their Thriving Future | Roshni Lodhia/Legado



"I AM A LEADER BECAUSE I PLAY A ROLE IN CHOOSING MY LEADER TO REPRESENT ME AND FOLLOWING UP WITH THEM TO MAKE SURE THAT OUR VOICES THROUGH THIS [LEGACY] PLAN ARE HEARD. THIS IS NOT ONLY FOR MY BENEFIT BUT FOR ALL."

- Sayaro Lenairerei, Ngilai Community,
Northern Kenya

THRIVING FUTURES IN ACTION: HOW IT WORKS





THRIVING FUTURES HAS LED TO GAINS IN CLIMATE JUSTICE THROUGH COMMUNITIES

- Securing land tenure
- Accessing education
- Accessing medical care
- Increasing women's empowerment
- Optimizing carbon markets
- Promoting peace and conflict resolution
- Integrating their community-led priorities in local government plans/budgets
- Undertaking climate-adaptive livelihoods

OUR OUTCOMES

Climate justice is achieved when **power is in the hands of local communities to develop and implement sustainable solutions** that increase their resilience to the challenges they face. Legado's Thriving Futures process has three critical outcomes:

Ensuring a diverse group of voices is incorporated in the spaces where decisions are made, focusing specifically on the inclusion of women

Uniting communities around a shared vision and prioritized legacy plan while activating individuals for leadership in the process

Increasing individuals' abilities to adapt and respond + building on a community's current assets and increasing capacity for effective collective action



WE MEASURE OUR IMPACT AT THREE POINTS:



Stakeholder Involvement (3-6 Months)

I have shared my vision for tomorrow



Plan Co-Development (6-12 Months)

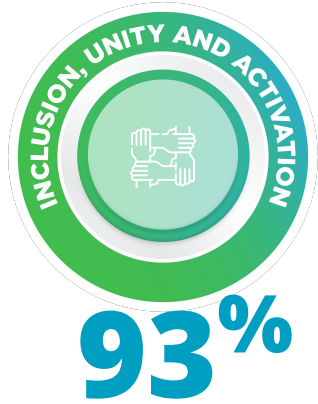
We are working together to put our plans into action



Plan Implementation (1-5 years)

We are making our plans a reality

OUR IMPACT TO DATE



of community members who went through Thriving Future programming feel strongly united with their community



Community-identified priorities in process
36 Community-identified priorities driving local government planning



of individuals who have been a part of Thriving Futures say their participation in community activities has increased

Results from community-identified and -led priorities include:

100% Community land titled leading to tenure security around Mt Namuli

1 New maternity shelter valuing Samburu cultural traditions operating at local dispensary in Ngilai, Kenya

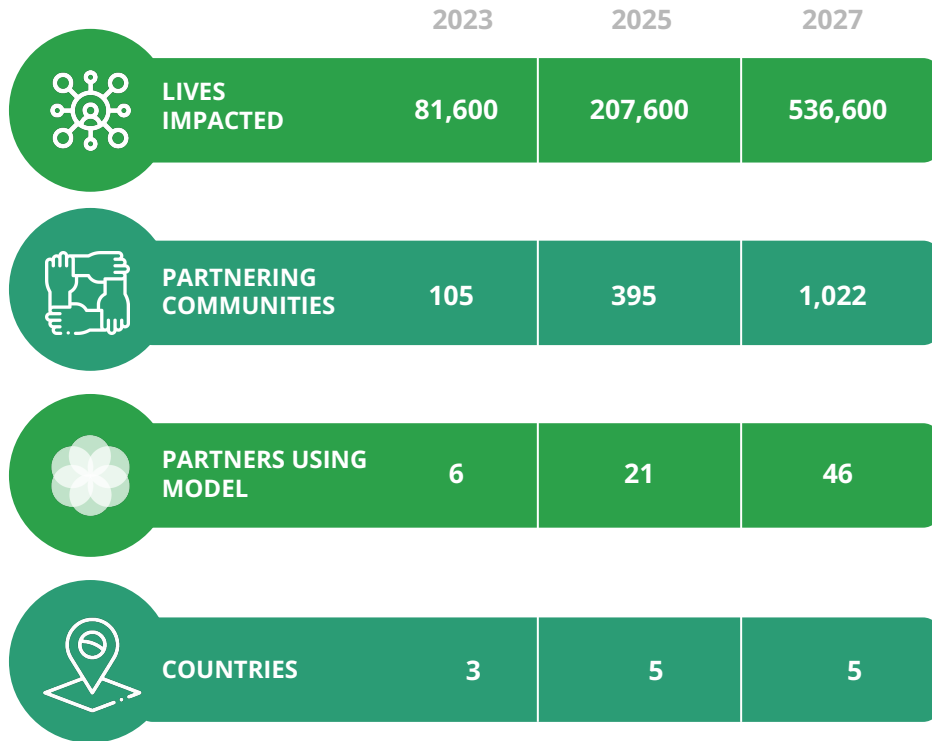
33% Reduction in deforestation rate across Kenya and Mozambique partnership landscapes

100% of core Mt Namuli area with Community Natural Resource Management Committees

225% Increase in community health care worker support at Mt Namuli during onset of COVID-19

*Curious why so many of these priorities are Mozambique focused? Our flagship partnership is with the Lomwe communities stewarding Mt Namuli. Please stay tuned for more details from Peru and Kenya in Q4 2023

OUR REACH & GROWTH



Our projections are conservative. The size of the problem requires collaboration at scale across multiple sectors but it must begin with putting the voices and needs of IP&LCs at the centre. Then it needs to involve values-aligned partners who support their Thriving Futures.

We are receiving intense demand from IP&LCs and those who want to support their efforts, which is why we are confident in these projections of growth.

Our ability to scale is dependent on working together with IP&LCs and other partners to help us engage communities, replicate and grow sustainably.

JOIN US AS A FUNDER OF THRIVING FUTURES

By December 2023, Legado is raising the final \$500K of US\$1.5M push to:

- Launch phase 1 to expand this approach to 43 other conservancies in Kenya in the next three years, supporting 465,000 people and 6.2 million hectares.
- Double program size in Mozambique.
- Leverage 250K of match funding to drive Thriving Futures in Peru.

In 2024-2025 we are raising an additional US\$6M to:

- Pilot and scale the Thriving Futures model in Ethiopia, Indonesia, Colombia and beyond.
- Expand operational resources and proximate teams.

Your support of Legado is **catalytic**. It allows us to unlock public and private funding directly and indirectly from stakeholders such as USAID, UNICEF and more.



Youth running in Ngilai, Kenya | Roshni Lodhia/Legado



APPENDIX A

HEALTH AS A 360 COMMUNITY LED PRIORITY

This appendix serves as short case study showcasing how the Ngilai community identified their Thriving Future health goals and priorities.

Thriving Future priorities are a unique outcome of the Thriving Future process and represent the core of a 360 community led approach. To create Thriving Future priorities community partners map their strengths and resources, yielding priorities that center on one dimension (human health, education, etc) but intersect multiple dimensions.

This ensures that community objectives are not siloed or oppositional (ie building a medical clinic that deposits waste into a river) but rather are holistically developed to serve people and place.



**THE DESIRE AND RIGHT TO
GOOD HEALTH IS PRESENT IN
EVERY COMMUNITY AROUND
THE WORLD.**

Ngilai community members mark the official opening of the new maternity shelter, envisioned, built, and completed as a Thriving Future Priority. (Photo: N. Leringato/ Legado)

HOW THE NGILAI CONSERVANCY COMMUNITY IN NORTHERN KENYA USED THE THRIVING FUTURE PROCESS TO DRIVE THEIR HEALTH CARE FUTURE



1. COMMUNITY STRENGTHS, RESOURCES, AND CHALLENGES ARE ASSESSED BY THE COMMUNITY ON THEIR TERMS AND MAPPED TO EACH PRIORITY.

NGILAI'S HEALTH ASSETS AND RESOURCES INCLUDE:

We have a strong belief system in wellness, committed community members, a cross-generational support system, a strong knowledge of traditional medicine and trust in our community health care workers.

We have rural health clinics that are accepted but are understaffed and under-resourced. We have strong traditional maternal health practices and beliefs but they are not integrated into these clinics.

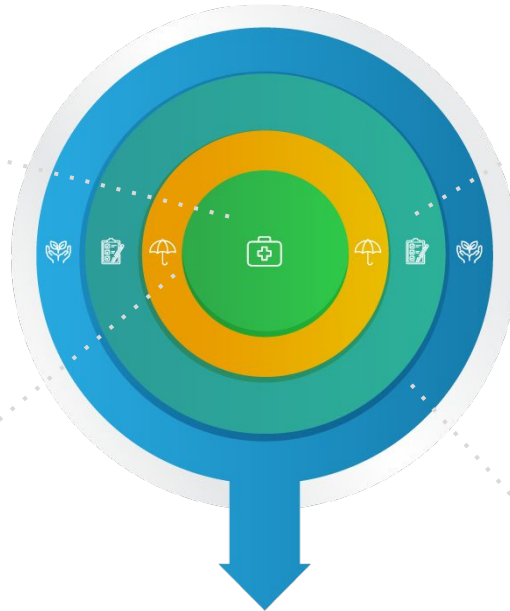


2. UMBRELLA GOALS WHICH BUILD ON THE ASSETS AND RESOURCES ARE DECIDED BY CONSENSUS

NGILAI'S UMBRELLA HEALTH GOALS:

We want to increase access to health care, respecting and integrating our culture of Samburu medicine.

We want to increase the range of health services at the community level to treat injuries, children, pregnant women, the elderly, and people with disabilities at the village level to have a healthy community.



3. INITIAL PRIORITIES TO MEET THESE GOALS ARE IDENTIFIED AND THEN A REALISTIC PLAN OF ACTION IS BUILT FOR EACH.

NGILAI'S PRIORITIES

Phase 1 priorities (priorities that can be achieved within 6-12 months by building on existing partnerships and with initial financial support)

- The construction of a maternity shelter adjacent to the Lolkuniyani clinic: **Completed**
- The installation of solar power at the Ngilai clinic: **Underway**
- Establishment of fuel reserves for emergency response at the local clinics and dispensary in Ngilai: **Underway**

Phase 2 priorities (priorities which will necessitate new partners and funders)

- Health needs integrated into district health planning: **District coordination underway**
- Capacitation (ensuring ongoing health care staff, training, and supplies) for existing and new health efforts: **Ongoing work with district and partners**
- Increased support across health priorities via a national or international health partner: **Pathfinder discussions underway**



COMMUNITIES LEAD ON FULFILLING CURRENT AND EMERGING PRIORITIES WHILE EVALUATING COMPLETED PRIORITIES ANNUALLY IN ORDER TO ADVANCE THEIR OVERALL HEALTH GOALS TOWARDS A THRIVING FUTURE.



DIVE IN DEEPER

SEE OUR WORK IN ACTION BY CLICKING ON THE VIDEO ON THE LEFT

[LEARN](#) FROM THE NGILAI COMMUNITY ON HOW THEY LEVERAGED A 360° COMMUNITY-LED APPROACH TO PURSUE THEIR HEALTH PRIORITIES

DISCOVER MORE AT [LEGADOINITIATIVE.ORG](https://legadoinitiative.org)

PROGRAM PARTNERS

Our regional and local partners working to co-create Thriving Futures with communities they serve:



PROGRAM FUNDERS

Thriving Future programming has been funded by the following groups for specific in-country implementation:



RAINFORREST TRUST

The Nature Conservancy



USAID FROM THE AMERICAN PEOPLE

LEGADO SUPPORTERS

Legado is directly supported by a variety of generous foundations, corporations and private donors, among them:



THE LUCY FOUNDATION

